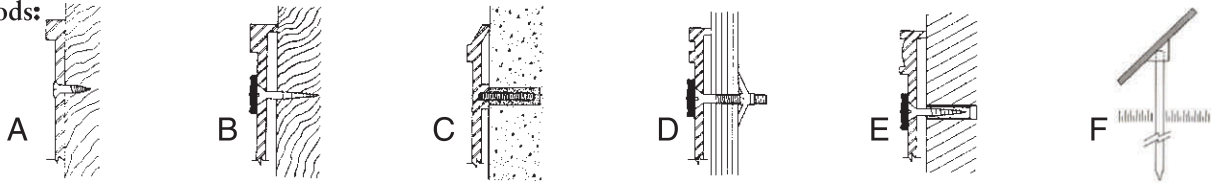


# Castings / Specifications

## Mounting Methods:



- A Wood Screws:**  
For mounting to wood surface, (request plastic shields for non-wood surfaces).
- B Wood Screws and Rosettes:**  
For mounting larger plaques to wood surface.
- C Blind Mounted Studs:**  
For concealed mounting to brick, stone or wood.

- D Toggle Bolts and Rosettes:**  
For mounting to drywall or hollow walls.
- E Wood Screws, Anchors and Rosettes:**  
For mounting to brick, stone or cement.
- F Stake Mount:**  
Inserts into ground or concrete.

## Standard Borders

available on any size plaque



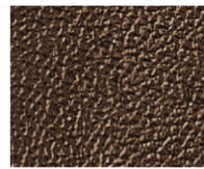
Flat Band



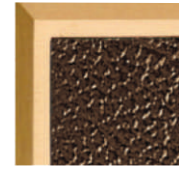
Bevel



Double Band



Plain Edge



Flat Band | Bevel



Classic

## Ornamental Borders

available on any size plaque



Beaded Bevel



Egg & Dart



Ivy Leaf

## Ornamental Borders

available on plaques 8" x 10" and larger



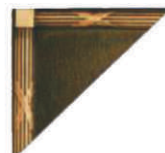
Laurel



Oak Leaf



Ogee



Reed & Ribbon



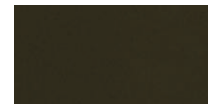
Roman Tongue



Tuscan

## Background Colors:

Plaque borders and letters are sanded to a satin grain. Shown below are standard contrasting background colors. Custom colors are available.



Brown



King



Gold



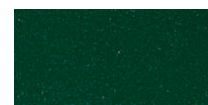
Grey



Black



Red



Green



Oxidize

## Letter Styles:

We can digitally reproduce virtually any typeface or logo from camera-ready artwork. Illustrated are nine of our most popular and practical typefaces, and three foreign language typefaces.

OPTIMA

AVANT GARDE

TIMES ROMAN

עִיבְרִית

HELVETICA

FUTURA

KORINNA

ΕΛΛΗΝΙΚΑ

HELVETICA COND.

CLARENDON

GARAMOND

РУССКАЯ